

Model: BDLX-105

Ladder Extension

5' LADDERSTAND EXTENSION

MAXIMUM WEIGHT LIMIT: 500 POUNDS



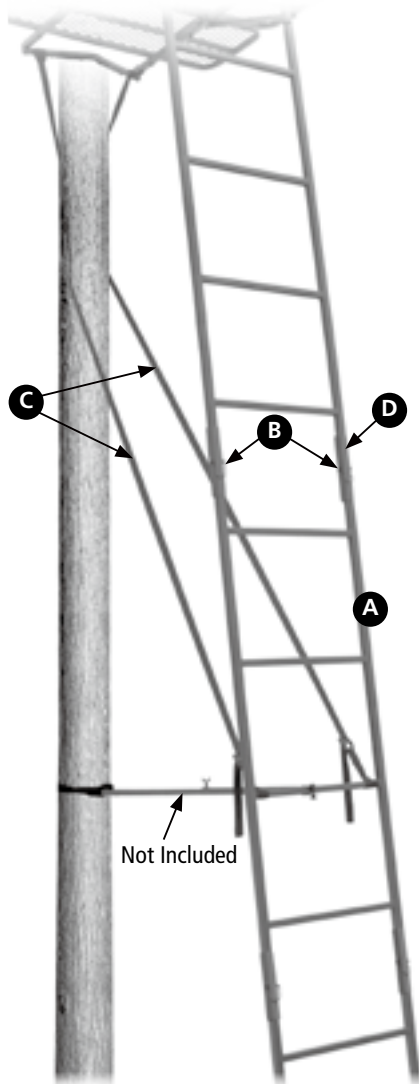
WARNING

- **IMPORTANT:** This product fits ALL "2007-2009" Ladder Stands, "2010" BDL-300/365, and "2011-2013" Models: BDL-300/302/365/401/451 ONLY. Never add ladder extensions to models BDL-385/386/1045.
- Obtain/Review/Understand/Follow ALL instructions/warnings for the product receiving the ladder extension FIRST before adding this product. NEVER, UNDER ANY CIRCUMSTANCES, add more than (1) ladder extension to ANY product.
- **STOP!** When hunting from any tree stand, falls can occur at any time which can cause serious injury or death. DO NOT use any tree stand without a Full Body Harness (FAS) that meets TMA standards. NEVER be detached from the tree for any reason or at any time. Read/Understand/Follow ALL instructions/warnings PRIOR TO EACH USE.
- Do not return this product to the retailer. Call BIG DOG TREESTANDS for replacement of any damaged or missing parts.

Inspect ALL product components for evidence of damage or wear sustained during shipping/handling/manufacturing of the product prior to assembly or use. If for any reason you are not satisfied with product or with any product component, DO NOT use until the problem has been resolved.

PACKING LIST:

A	1 Ladder Section	Part # L-2000
B	2 Quick Pin	Part # 8010
C	2 16' Button Stabilizing Strap	Part # BSS-250
D	2 Safety Sleeves	Part # SSL-5000



SAFETY WARNINGS

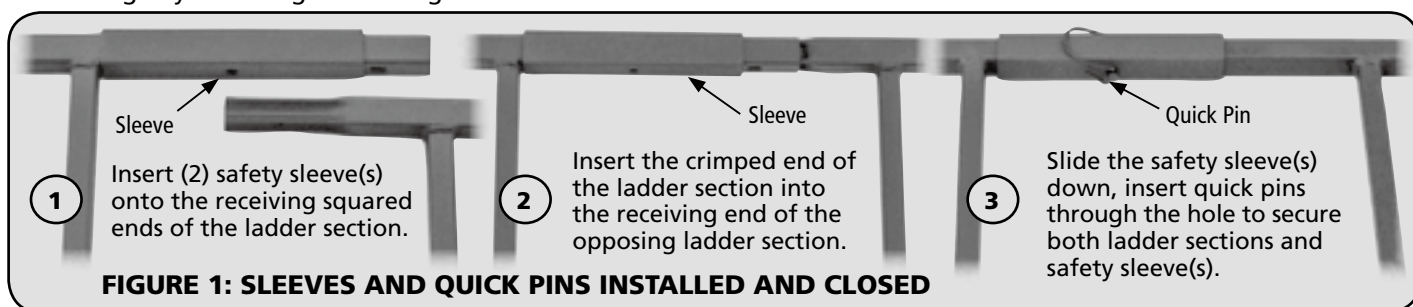
- **WARNING!** Read/Understand/Follow ALL instructions and warnings thoroughly before using your Fall Arrest System (FAS) (that meets TMA standards), Tree Stand, cinch belt/ratchet/stabilizing straps or ropes, and climbing devices prior to EACH use. Replace any suspected or damaged components with only factory authorized parts/components. Discontinue use if any part of your FAS or tree stand shows any type of weathering, damage, or wear. ALWAYS inspect/check ALL expiration dates/tags on ALL straps/FAS prior to each use. Failure to follow harness instructions could result in not being able to return to the stand and being suspended in a harness after a fall.
- **WARNING!** It is IMPORTANT to practice proper and safe use of your Fall Arrest System (FAS) and Tree Stand at GROUND LEVEL prior to each use and BEFORE using in an elevated position. Note: The Fall Arrest System (FAS) is an integral part of any Tree Stand and must be worn and attached to the tree at ALL times. If the FAS is not present, hunt from the ground.
- **WARNING!** Always insure that your Fall arrest System (FAS), Tree Stand, ALL straps/ropes and climbing devices are ALL in good working order without defects, wear, broken or missing parts prior to each use. This inspection includes the following prior to each use: Re-Tightening of all hardware, inspection of ALL parts/components of the tree stand and the Fall Arrest System (FAS).
- **WARNING!** Always wear a Fall Arrest System (FAS) (that meets TMA standards) properly attached to the tree from the time you leave the ground until you return safely to the ground. Please see Fall Arrest System Instructions for proper and safe use of the Fall Arrest System (FAS).
- **WARNING!** Always practice your Recovery-Rescue-Relief (RRR) plan with your FAS at ground level prior to each use. Insure the (RRR) plan has been practiced/reviewed prior to hunting in an elevated position. If no plan is in place, hunt from the ground!
- **WARNING!** ALWAYS step down into the center of the platform on your fixed position stand from your climbing aide. Note: Your climbing aide should be at least 24" above the foot platform of your fixed position stand so you can safely step down into the center of the platform area. Insure to be attached to tree with your tether strap of your FAS or lineman's strap. NEVER be disconnected from the tree at ANY time while in an elevated position. Practice at ground level with your tree stand and FAS getting into the tree stand and onto the climbing aide while being attached to the tree with your FAS at ALL times.

INSTRUCTIONS FOR USE

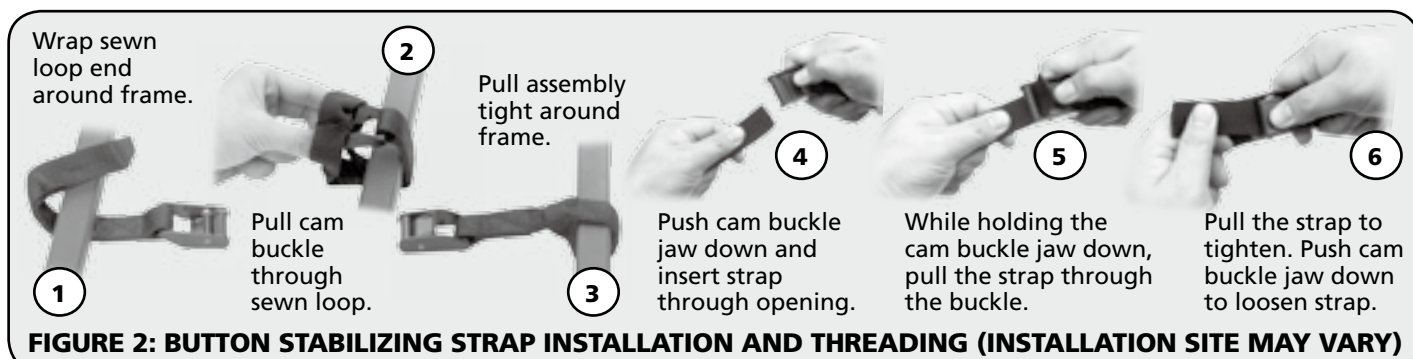
Note: Raising/lowering requires (4) or more able adults. ALWAYS practice at ground level with FAS and treestand until comfortable with product use. Inspect FAS/Treestand/Straps before leaving the ground or getting onto the platform. If adding on existing model in field, you will need to remove product from tree to add extension. Insure ladder ends, treestand, ratchet/button straps, stabilizing straps/ropes are free of damage or debris. Min. 12" diameter Tree is REQUIRED.

Thank you for purchasing the 5' Ladder Extension. This instruction will tell you how to assemble and use the product. Every year hunters are seriously injured in tree stand accidents. Please carefully read and follow these instructions. For missing or damaged parts, please call customer service for fast service at 1-866-387-2002.

- [If adding extension to model already in the field, it is REQUIRED to replace ALL straps/ropes] With the tree stand laying face down on the ground, insure all ladder sections are secured with (2) quick pins and (2) safety sleeves. Next, insure the bottom ladder section is free of any debris and insert the ladder extension **A** into the bottom ladder section of the tree stand and secure each side with (1) safety sleeve and (1) quick pin on each side (see **Figure 1**). Go back through the entire stand inspecting all hardware and parts for any damage or wear. Replace any part that is showing any visible sign of damage or wear.



- With the ladder stand laying face down on the ground with the end of the last ladder section about 3 or 4 feet away from the tree base, attach your existing Adjustable Support Bar assemble to the 6th or 7th ladder rung from "ground level" so that the "V" end of the adjustable support bar is pointed UP. Refer your model number instructions for proper set-up and attachment of adjustable support bar, ratchet/button straps, and stabilizing straps/ropes.
- Important: The ladder extension kit comes with additional stabilizing straps. These additional stabilizing straps are to be used in conjunction with original stabilizing straps or ropes. Attachment of the stabilizing straps are in the same location as your original stabilizing straps/ropes location per your product model. Please refer to your model number instructions for proper installation and location for the straps. Refer to **Figure 2** for threading the stabilizing straps that are included in this kit.



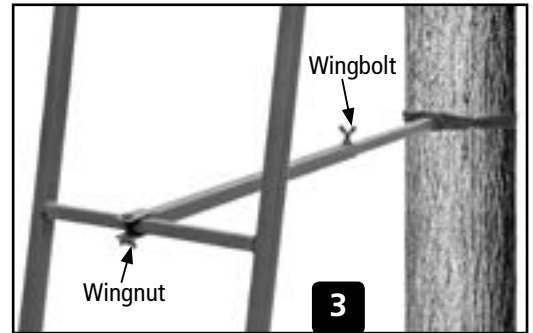
- STOP!!** It is required to have (4) or more able adults to set up any product that has an additional ladder section. (Use extreme caution and take your time during set-up or removal) (NEVER stand in direct path or to the side(s) of the tree when raising or lowering ANY tree stand) (Ladder sections that become bent during set-up or removal are not warranted). With (4) or more able adults, carefully push the ladder stand up with (4) or more able adults, carefully push the ladder stand up until the ladder stand rests in the center of the "V-Bar" and platform is level. Note: NEVER stand in direct path or underneath any treestand at any time. [Helpful Hint: Insert a stake into the ground at the first ladder rung to prevent the ladder stand from moving toward the tree while raising and lowering of the ladder stand. Also have someone pull on the (2) stabilizing straps & ropes behind the tree during raising and lowering the ladder stand] Next, move the ladder stand in or out until the platform is level. Once platform is level, stand on the bottom ladder rung until it sinks into the ground and bottoms out onto the bottom side of the ladder rung. This will insure the ladders sections do not move while ascending and descending from the ladder stand or during the changes in the ground. Note: When raising/lowering any treestand, "DO NOT" flex/stress the ladder sections where they would become arched or bent when raising/lowering the treestand. Too much stress or flex in the ladder sections will cause permanent damage in the ladder sections. Keep all flex/stress out of the ladder sections during set-up/removal. Use a long board or pole to push against the platform to keep the stress out of the ladder sections if needed.
- Adjust the ladder support bar until the "V" of the ladder support bar is firmly against the tree. Strap the support bar to the tree using (1) push button stabilizing strap or Stabilizing rope (not included). See illustration below for threading procedures. NEVER adjust the Adjustable Support Bar once your stand is in position and your platform is level. Note: The ladder sections should be slightly arched away from the tree when support bar assembly is secured to the tree.
- Take (2) Looped Button Strap mechanisms and attach them to the lowest ladder rung from the ground level (2nd or 3rd from ground level, location may vary) on each side of the ladder rung. Note: Location of the button strap varies depending on model and extension used. Keep the location close to the ground as possible. Next, take the (2) Stabilizing Straps hanging down from the V-Bar, pull down tightly from behind the tree and criss-cross the straps behind the tree to form a "X" with the straps. Keeping tension on the strap(s), walk around to the front of the tree and thread each strap into each button mechanism on each side of the ladder section rung as close to the ground as possible. These straps will hold the top section to the tree until the platform section is secured to the tree with the ratchet strap/s. Repeat step for the original stablizing ropes. Review original instructions for model adding the accessory. [NEVER remove the ropes/straps from the tree nor attempt to climb the ladder unless the stabilizing straps/ropes and Adjustable Support Bar is firmly attached to the tree.]

7. Review/Understand all FAS/Treestand Model used/Strap instructions for proper threading of ratchet/button straps locations before leaving the ground as well as checking/insuring all ladder sections are pinned together, ground is firm and level under the bottom ladder section, and all the ropes and Adjustable Support Bar is secured firmly against the tree. Next, being extremely careful, slowly climb up while leaning forward w/(3) points of contact as you climb. Upon arrival to the platform, attach FAS harness to the tree before securing platform section to the tree and before stepping onto the platform. Next secure ratchet strap at the V-Bar around tree and secure tightly. Note: Attach all straps to the tree depending on which model is applied. Refer to model used for proper ratchet placement and locations before leaving the ground. Tie off all remaining strap ends. ALWAYS wear/use a Fall Arrest System at all times during Use/Set-Up/or Removal of any treestand. Always check ALL straps before each use for damage or wear.

LADDER SUPPORT BAR STABILIZING ROPE INSTRUCTIONS

Note: Adjustable Support Bar Assembly and Stabilizing Rope are supplied with the original product.

1. Insure that the Adjustable Support Bar Assembly "V" end is tight against the tree and the opposite end (tab end) is over the 6th or 7th ladder rung (from GROUND LEVEL). Insure the 8mm x 1-5/8" bolt/wingnut is securely tightend. Check to insure the Wingbolt is securely tightend. Note: The Adjustable Support Bar Assembly must be level when secured to tree and the ladder rung. DO NOT over-tighten the Wingbolt.
2. Tie-Off one end of a Stabilizing rope near the "V" end of the Adjustable Support Bar Assembly. Wrap the rope Clock-Wise around the tree until coming back to original anchor/tie-off point. Wrap the rope around the tube (near original tie-off point) and pull tight. Continue this process until all of the rope is firmly secured around the tree. Tie off the remaining rope end to the tube near the "V" end of the Adjustable Support Bar Assembly. Warning: NEVER climb up or down ANY ladder stand without having the Adjustable Support Bar Assembly secured to the tree properly. (Fig. 3)



INSTRUCTIONS FOR REMOVAL

WARNING!! Always wear/use your Fall Arrest Sysytem (FAS) at ALL times while Using/Installing/Removing any treestand. DO NOT remove the Adjustable Support Bar or Stabilizing Straps/Ropes until you are ready to lean this product away from the tree while you are safely on the ground. (4) or more able adults is required for removal of any product.

1. Inspect to insure that all stablizing straps/ropes are securely attached to tree, Adjustable Support Bar is properly attached to the tree, ladder sections are pinned together, and that the ground beneath the ladder sections are firm and level, next slowly climb up the ladder stand using 3 points of contact while leaning slightly forward as you climb. Once you reach the platform, attach your FAS to the tree securely. Review all FAS instructions and warnings prior to each use and before leaving the ground. While attached to tree with your FAS, keeping your weight into center of the platform, carefully loosen and remove LOWER V-Bar ratchet straps FIRST before loosening/removing the UPPER V-Bar ratchet strap (located under the seat platform). IMPORTANT: NEVER un-tie the stabilizing straps/ropes from the V-Bar location while on the ladder stand with the ratchet straps un-fastened and NEVER remove the Adjustable Support Bar Assembly from the tree until safely on the ground and ready to lower the treestand to the ground. Slowly and carefully climb down the ladder stand. Careful not to shift your weight around while climbing down.
2. While safely back to the ground, carefully remove the Adjustable Support Bar assembly from the tree and ladder rung. Next, un-fasten the stabilizing ropes/straps from the lower ladder rung. IMPORTANT: NEVER walk or stand under the ladder stand at any time during set-up/removal/use of any treestand. DO NOT remove the Adjustable Support Bar Assembly or stabilizing straps/ropes until ALL straps have be removed from the stand and the product ready to be lowered away from the tree.
3. With (4) or more able adults, carefully and slowly walk the ladder stand back to the ground. Insure to have someone behind the tree holding onto the stabilizing straps/ropes to help control the lowering rate of the treestand to the ground while (1) person is on each side of the ladder sections to aide in the lowering of the ladder stand. Do not allow the unit to fall to the ground. NEVER walk, stand, or hold the ladder stand in the same path of the treestand being lowered to the ground. DO NOT flex the ladder sections while raising/lowering any treestand. This will put stress on the ladders causing them to bend.

SAFETY WARNINGS

Please take the time to read and understand ALL safety warning points. The information contained can save your life!!

- WARNING! Always store your FAS, tree stand, all straps & ropes, complete set of instructions & warnings & all climbing devices in a cool, dry location away from sun light, elements of weather, sharp objects, or any type of wildlife. Note: Wildlife can chew on the straps and seats while the stand is not in use which can cause serious damage to the tree stand. ALWAYS check all straps and seats prior to each use.
- WARNING! Hunt with a friend or a partner to insure someone knows your hunting location as well as the time you will return from the field. Always keep a cell phone or walkie-talkie on your person at all times.
- WARNING! Always use (3) or more able adults when setting up or removing any tree stand unless instructed to have more able adults available to assist. The use of a min. 12" diameter tree is required on ALL tree stands.
- WARNING! The use of a hoist line to pull up or down your fixed position stand to the desired height while using the lineman's strap of your FAS is required. Note: Use of a screw-in hook or some type of hanger to hold the fixed position stand so you can have your hands free to secure the tree stand straps is required. WARNING! Understand/Follow the intended use of the tree stand/FAS and adhere to ALL instructions and warnings which pertain to the safe and proper use of any Big Dog Treestands products.
- WARNING! Have a cell phone, walkie-talkie, two-way radio, GPS locator, or whistle on your person at all times for emergency purposes.

- **WARNING!** There is a time to make a correct decision on what action to take in the event a fall would occur while wearing a fall arrest system. It is important to remember "DO NOT PANIC". Remain calm and implement your practiced/reviewed Recovery-Rescue-Relief (RRR) plan.
- **WARNING!** It is required to use a Fall Arrest System (FAS) with a Suspension Relief Device (SRD). The (SRD) is to allow relief of a persons weight on the lower extremities if suspended in a harness, or allow the user to descend to the ground. These devices help maintain circulation in the legs and prevent suspension trauma (blood pooling).
- **WARNING!** It is REQUIRED that you oil and lubricate or apply a protective sealant to ALL hardware/components prior to each use or as needed to prevent corrosion. Keep all lubricants and sealants free and clear of all straps or ropes.
- **WARNING!** You must replace ALL straps/ropes and suspension style seats each year prior to use. Use of Big Dog Treestands replacement straps and parts is required. Any other type of straps or parts will be viewed as a modification to the product. Any modification will void the warranties and relieve Big Dog Treestands Inc. from all liabilities.
- **WARNING!** Always inspect the tree the tree stand is used in/tree stand/straps/cables/FAS/ladder sections are pinned together/ground beneath the ladder stand or tripod or quad pod is firm and level/adjustable support bar is properly attached and secured to the tree- prior to each use. Do not use if any visible or physical damage or wear is present. **WARNING!** it is recommended to replace all hardware, cables on your tree stand every (2) years or sooner if inspection finds it necessary. Replace all straps and ropes annually.
- **WARNING!** Failure to use a Fall Arrest System (FAS) that meets TMA standards at ALL times can result in serious injury or death.
- **WARNING!** Insure all contact points of the tree stand, climbing aide, and FAS are in contact with the tree at all times and are secured properly before leaving the ground. **WARNING!** Proper threading, tightening, fastening, and location of all straps and cables is CRITICAL. Insure all straps and cables are properly attached and secured on the tree stand and to the tree and are free of any damage or wear prior to each use.
- **WARNING!** Inspect ALL expiration tags (or date codes) on all straps and FAS prior to each use. Never use any strap or FAS that is expired or showing any visible sign of damage or wear.
- **WARNING!** Insure all tripods and quad pods are properly staked into the ground to prevent movement in the unit during high winds, Always leave all windows open when not in use. Note: It is advisable to have a certified electrician ground these units to the ground in the event of begin struck by lightning.
- **WARNING!** When using any ladder stand, attach your FAS to the tree upon arrival to the foot platform area. Never stand, lean, or kneel on the seat platform while securing the ladder stand to or from the tree. The seat platform is for sitting only!
- **WARNING!** Remove the Fall Arrest System from service after (2) years from the date on the tag of if a fall has occurred, FAS has subtenancy a load, or if daily inspection finds it necessary to replace. ALL cinch belts and ratchet straps must be replaced every year.
- NEVER leave the ground without being properly attached to the tree with your FAS at all times until safely back to the ground. Failure to wear your FAS or if the FAS is not properly attached at all times can result in serious injury or death. Single safety belts or chest harness ARE NO LONGER ALLOWED AND SHOULD NEVER BE USED.
- NEVER climb with your weapon. Insure that the firearm or bow is unloaded with the barrel pointed to the ground when raising or lowering to the ground with a haul line. A haul line is required to raise or lower any weapon to or from the tree stand.
- NEVER climb with anything on your back or waist. Always use a haul line to raise or lower your gear.
- NEVER exceed the manufacturer's total weight limit for the product which includes your body weight and all your gear.
- NEVER adjust any cables, straps, pins, ropes while standing on any treestand. ALL adjustments must be made at GROUND LEVEL.
- NEVER (FOR ANY REASON) climb ANY tree stand without the criss-cross straps/ropes and adjustable support bar properly attached and secured to the tree!!! Failure to have these attached can result in serious injury or death.
- NEVER use this product if under the influence of alcohol, mind alternating drugs, cold medicine, prescription medicine, flu medicine, have any type of heart condition, dizzy or feeling ill, have any dizzy spells, feel nauseous, no FAS present, or have had prior surgery or medical condition that could cause i.e, heart condition, joints that lock-up, spinal fusions, or if not well rested. DO NOT use ANY tree stand without consent from your medical doctor for safe and proper use of the tree stand or FAS if any of the above conditions exist.
- NEVER modify your tree stand in any way by repairs, replacing parts, or alternating or adding attachments to without explicit authorization in writing by the manufacturer.
- NEVER replace any parts, add attachments, make adjustments, make repairs unless the product is at GROUND LEVEL only.
- NEVER exceed the manufacturers suggested height limit. NEVER leave any tree stand attached to a tree for more than (2) weeks. Tree growth will stress the straps to the point of possible failure that can result in serious injury or death.
- NEVER jump, bounce, lean out from, lean against the shooting rails or arm rests, or sleep in any tree stand for any reason or at any time.
- NEVER use any tree stand during a thunderstorm, raining, sleet, snowing, or if any other adverse weather conditions exist that have the potential of producing high winds or lightning. Never use any tree stand if snow, ice, or water is present on the tree stand, ladder sections, climbing aide, or platform area. If any of these conditions exist or arise, end your hunt and hunt from the ground.
- NEVER use a tree stand for any purpose other than hunting. Do not use on utility poles or any other type of man made structure. Never use any type of tree stand near or by any type of power generating stations.
- NEVER use any tree branch for means of support or as a step. NEVER select a tree (to place a tree stand) that has visible signs of loose/smooth bark or in a tree that is diseased or dead. Select only straight/healthy trees to place any tree stand.
- NEVER loan or allow anyone to use your tree stand or FAS without reading the entire set instructions a warning of the product for safe use. If the tree stand/FAS is sold/loaned/or given away, it is the responsibility of the tree stand/FAS owner to give a COMPLETE set of instructions/warnings and safety DVD to the recipient of the unit.
- NEVER use any tree stand or FAS without fully understanding the safe use of the product. If you have any questions for safe and proper use of the unit or have a question about assembly, please call Big Dog Treestands for assistance 1-866-387-2002.
- NEVER leave seat cushions, blinds/skirts, enclosure fabrics exposed to the weather and direct sunlight. UV light will fade the fabric. Seat cushions, skirts, and enclosure fabrics are not warranted.
- NEVER use ANY tree stand without prior inspection of the entire unit at ground level or before stepping onto the foot platform. Inspection would include to check the following for damage/wear/weathering/or expired dates: straps, cables, ropes, FAS, pinned ladder sections, criss-cross straps are in place, adjustable support bar is securely fastened to the tree, ground beneath the ladder stand or tri/quad pod is firm and level, all hardware (nuts and bolts), inspection of the tree to insure it is healthy, and if any other part or components is showing any sign of damage or wear. If inspection finds any parts showing any sign of damage or wear, do not use and hunt from the ground. Please call Big Dog Treestands Inc. for replacement parts. Failure to replace components showing any sign of damage or wear can result in serious injury or death.